

Level 6 Paramedic Practitioner Programme Handbook

2023 - 2025



T: 01325 609 030
E: contact@medipro.co.uk

Page of content

Welcome from Medipro Programme Team.....	4
Introduction.....	5
Programme Overview.....	6
The programme ethos.....	8
Programme curriculum.....	10
Programme admission requirements.....	12
What will the programme consist of?.....	15
Level 5.....	16
Level 6.....	20
4 Year Roadmap.....	24
Teaching, Learning and Assessment.....	26
How will I be assessed?.....	27
Assessment Regulations.....	28
Practice-based education.....	30
How will I be supported to succeed?.....	31

Page of content

Support for learners.....	32
What are my responsibilities as a learner?.....	37
Health and fitness.....	38
Preparing to study.....	39
Key programme information	40
Programme funding arrangements.....	41
Commonly asked questions.....	42
Notes.....	53

Welcome from Medipro



Brian English

Managing Director

Welcome to Medipro and the Level 6 Paramedic Practitioner programme. This programme has been designed to enable you, as a healthcare professional to develop your skills, knowledge and behaviours in current paramedic practice. Medipro hope you will find the programme enjoyable, challenging and rewarding. This handbook provides specific information about the programme and is designed to support and inform you of specific issues that may arise during your time here at Medipro and whilst in Practice-Based Education.

Details can be accessed on the Medipro website: www.medipro.co.uk. If you have any questions or concerns regarding the programme, you can discuss these with the Programme Lead, or any of the Medipro teaching, learning and assessment team, but we recommend that you contact your Module Lead in the first instance.

Medipro Managing Director, Brian English, has overall responsibility for all teaching, learning and assessment strategies along with all other educational activities. He is a HCPC registered Paramedic and can be contacted by telephone on 01325 609030 or by email at brian.english@medipro.co.uk

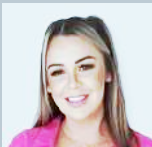
Introduction

Formed in 2008, Medipro is one of the largest, independent providers of pre-hospital education in the UK. Delivering only accredited courses ensures that students are able to work in large multinational corporations, specialist organisations, and the NHS where regulation and governance is paramount. The core business of Medipro is to provide high standard of teaching, learning and development for all learners in its care. This includes considering individual learning needs, offering fair and consistent appraisal, and providing a supportive and safe learning environment.

Medipro staff contact details



The Programme Lead is John Evans who is an HCPC registered paramedic and he can be contacted by telephone on 01325 609030 or by email at john.evans@medipro.co.uk



The Programme coordinator is Melissa Dickson and she can be contacted by telephone on 01325 609030 or by email at melissa.dickson@medipro.co.uk



The Practice Placement Facilitator is Rebecca Brannan-Robson and she can be contacted by telephone on 01325 609030 or by email at rebecca.robson@medipro.co.uk

General admissions can be contacted on admissions@medipro.co.uk 01325 609030

Programme overview



Developing your knowledge, skills and behaviours in paramedic practice

The level 6 Paramedic Practitioner programme supports, educates, and develops learners into safe, enquiring and effective practitioners equipped with the knowledge, skills and behaviours to care for patients, families and colleagues in a range of challenging and unpredictable situations. This is a 4-year part-time re-registration programme with 2 academic levels commensurate, on completion with **FHEQ level 6**.

Upon successful completion of the programme, learners will be eligible to apply to the **Health and Care Professions Council (HCPC)** for registration as a **Paramedic**.





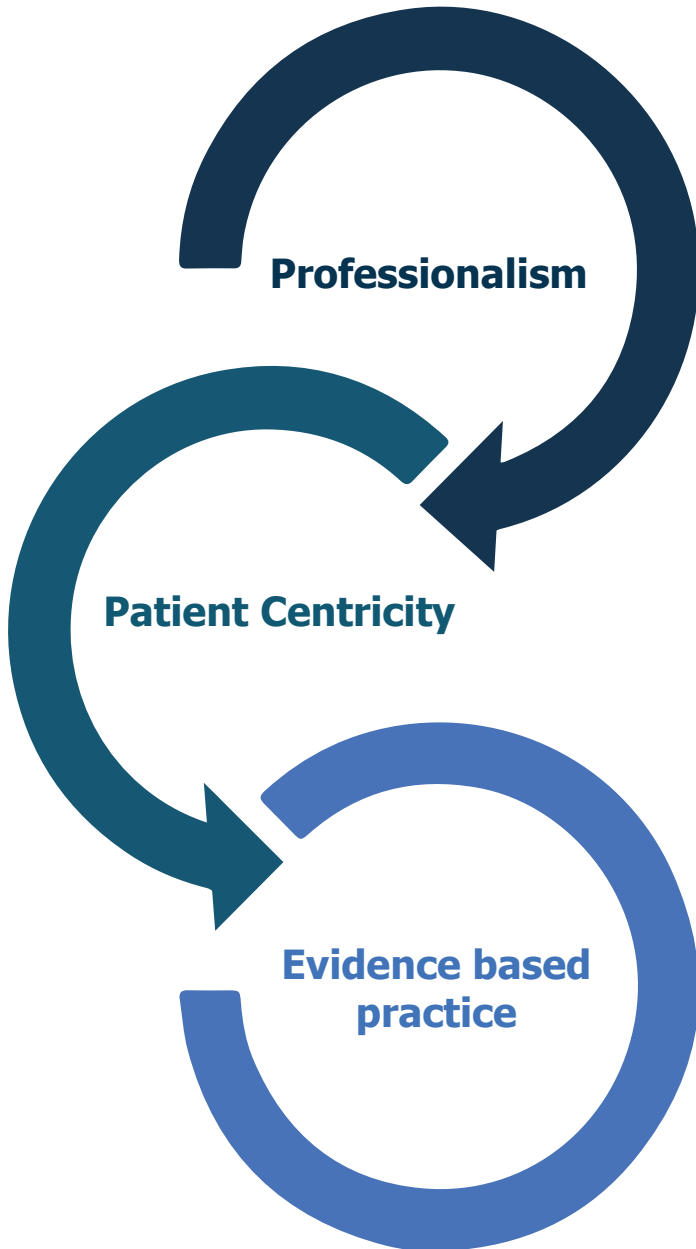
Programme curriculum

The programme uses a spiral curriculum design. This is a common educational approach in pre-registration education based on Bruner's cognitive theory. Learning is an iterative process in which key topics are introduced and revisited across the programme with increasing levels of complexity. New learning is explicitly related to previous learning and expanded upon until it becomes 'cemented'. This curricula model encourages deeper learning and retention of information into the long term memory, the cyclical process is linked with competency development as the method promotes repeated cycles of knowledge rather than linear advancement, reinforcing and increasing information over time.

Applying this approach, the spiral curriculum leads to a deep understanding of knowledge, proficiency in performance, building confidence, strengthening long-term memory and thinking skills, problem solving, and decision-making in the learner.

Module learning and assessment is constructively aligned to the HCPC Standards of Proficiency – Paramedics. Within the programme learning is thematically developed using key concepts of patient centricity, professionalism and evidence-based practice.





Programme admission requirements



Recruitment, Selection and Programme entry assessment and requirements

Applications will be submitted and screened by the admissions team using parameters agreed by the programme committee. Those who pass initial screening will be assessed by the programme and module leads or nominated members of the delivery team to progress to complete the appropriate academic and professional entry assessment.

A summary of minimum screening criteria:

- Minimum of (or equivalent*) literacy and numeracy level 2 **AND**
- Achievement of the following regulated qualification (or equivalent**):
Level 4 Diploma in Associate Ambulance Practitioner

* Equivalent qualification includes GCSE level A*-C, or the new GCSE standard 9-4, Scotland National level 5 or international level 4 (PIAAC, AILS, ALL)

** Any equivalent qualification would need to go through a full RPL mapping process

All learners who pass both the minimum screening criteria **AND** the professional interview stage will be offered a place on the next available programme. This will occur within 10 working days of the professional interview.

All learners who pass the entry screening will be invited for:

- Professional interview to discuss your clinical journey and ensure you are prepared both clinically and academically to enter this programme.

Programme admission requirements

Disclosure and Barring Service (DBS)

Successful applicants will undergo enhanced checks via the DBS www.gov.uk/disclosure-barring-service formerly CRB. Your DBS will be applied for following an accepted offer onto the programme. All associated costs will be met by Medipro. All students must disclose any convictions to Medipro on application and any place offer would be subject to any Practice-based Education requirements.



International English Language Testing System

International English Language Testing System (**IELTS**)

Evidence required around a good reading, writing and spoken English (where English is the second language applicants must demonstrate competent skills in written and spoken English to IELTS 7.0 with minimum of 6.5 in each of the sub tests).



Immunisations / Vaccinations

All learners who successfully complete and accept a place on the programme will be required to undergo an Occupational Health Surveillance as well as immunisation programme for clinical practice. All associated costs will be met by Medipro.



Programme admission requirements

Equality, Diversity and Inclusion



Medipro actively supports equality, diversity and inclusion and has systems in place to monitor this throughout the programme from admission to completion.

Disability Support

Any learner registered as a disabled person or has a long-term health condition, will be advised to read the Health and Care Professions Council (HCPC) information.

Medipro strongly recommends that learners inform us about any long-term health conditions, learning difficulty or disability. This is so Medipro can assess whether we can deliver the programme in such a way that will not disadvantage the learner both with Medipro and whilst in Practice-Based Education.



Scan me to read the Health and Care Professions Council (HCPC) information.

What will the programme consist of?

The Level 6 Paramedic Practitioner consists of level 5 and level 6 modules, delivered over 4 years, adopting a part-time delivery model.

All modules are core and there are no option modules in the programme. To obtain a Level 6 Paramedic Practitioner award, learners must successfully complete all elements of the programme.

The structure of core content modules within the Paramedic Practitioner programme has been developed utilising best practice guidance from:

- QAA subject benchmarks and PHEQ level 6 – Paramedic Science (2019)
- HCPC Standards of Education and Training (2017)
- HCPC Standards of Proficiency – Paramedics (2023)
- College of Paramedics – Curriculum Guidance (2019)
- Care Quality Commission (CQC) Fundamental Standards, (2015)

The modules of study have been devised to ensure the programme fulfils the Standards of Education and Training from the Professional Regulatory Statutory Body (PRSB); the Health and Care Professions Council (HCPC).



**Professional
Record
Standards
Body**



Level 5

The learner will progress from the recognised Level 4 qualification and develop the core skills of a paramedic.

	Code	Modules Titles	Credits
LEVEL 5	SPS5-1	Foundations of paramedic practice	60
	SPS5-2	Physiological determinants of health	20
	SPS5-3	Patient centred care	20
	SPS5-4	Evidence based paramedic practice	20

The modules will develop a clinician along a journey pathway from novice to advanced beginner in communication, clinical skills, research and the holistic social and economic impact on illness and injury.

The journey will enhance the transferable skills from the recognised Level 4 and progress the learner on a pathway to critical thinking and problem solving.

The Level 5 element of the journey will engage the learner in the fundamental skills needed to gain the status of the advanced beginner with professional and ethical standards are at the forefront of every service user contact.

Developing their skills in the safety of simulation the learner will progress to a range of practice-based education to enhance their experience in a variety of placement opportunities. These placements will develop the learner towards the Paramedic Practitioner of the future.

PRACTICE-BASED EDUCATION

A day 'orientation to practice-based education' in which learners will gain an appreciation of the area of practice learners will encounter. It is also an opportunity to meet the practice-based education team, obtain awareness of the appropriate policies and key contacts.

Current available practice-based education areas include:

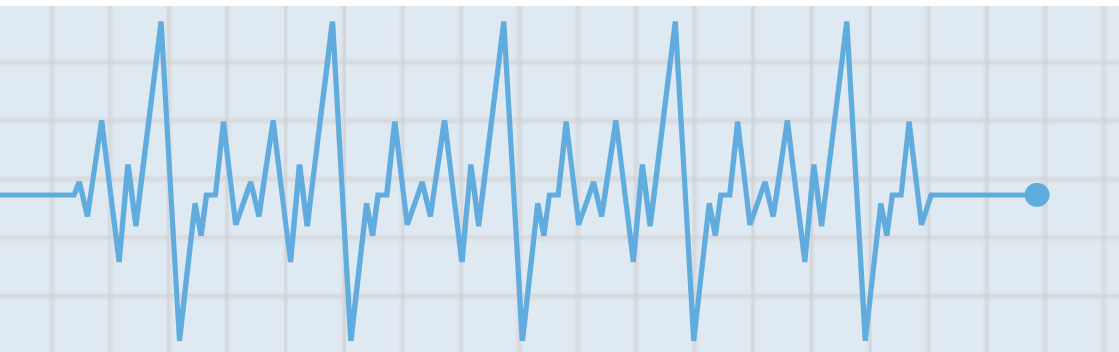
NHS Trusts	Clinical Placement Area	Hours
North East Ambulance Service NHS Trust	Placement orientation A&E and urgent care	200
North Tees and Hartlepool NHS Hospital Trust	Accident and Emergency	80
North Tees and Hartlepool NHS Hospital Trust	Theatres	40
North Tees and Hartlepool NHS Hospital Trust	Admission and Elderly Care	40
North Tees and Hartlepool NHS Hospital Trust	ITU / ICU	40
	TOTAL	400



Level 5

Within the programme, learners are exposed to a range of clinical placement areas with sequential competencies for practice developed commensurate with the programme level. Learners move from observing practice at the commencement of their programme, to gradual incremental competency development in preparation for autonomy on completion. Learning is facilitated by a Practice Assessment Document (PAD) which details competency development in line with the expected development for the stage of the programme. Learners are assigned a clinical mentor, a registered practitioner capable of supporting development within the placement area. The process is supported by a tripartite review process between learner, practice educator and academic tutor which takes a reflective approach to knowledge, skill, and behavioural acquisition within the placement area. Learners capture this detail sequentially within their PAD document, thus promoting personal accountability for learning and development.

Competency based education under a scaffolded approach increases learner accountability, allows for increasing levels of competency, practice-based learning, self-assessment, and individual learning experiences. Thus, bridging the gap between educational preparedness and readiness for practice.





Level 6

Progression to level 6 is dependent on meeting the full academic and clinical requirements of the programme for level 5.

	Code	Modules Titles	Credits
LEVEL 6	SPS6-1	Paramedic practitioner	60
	SPS6-2	Sociodemographic determinants of health	20
	SPS6-3	Leadership and management in paramedic practice	20
	SPS6-4	Contemporary issues in paramedic practice	20

Once all Level 5 elements are completed, learners can embark on the journey to level 6. This will be discussed and agreed at a Paramedic Practitioner L6 progression board. The learner's journey will now develop them for the progression from advanced beginner to competent. This journey will allow the learner to progress to higher level critical thinking with modules to look at advancing clinical practice to look at their ability to lead and support junior clinicians. The learner will look at health care systems and the structures supporting their future and the levels of organisation around them. This journey will support the learners understanding of the systems and structures that inform practice. The learners will develop their understanding of research and how to inform practice development. The last level 6 module will complete the academic journey to level 6 with a supported review of areas of personal interest and the journey towards career / professional development / ethical awareness and the journey towards the practitioner of the future. This will offer opportunities in practice-based education to enhance the journey from post registration towards the pathway of their choice.

Level 6

The level 6 journey will support the leader of the future, the mentor / educator of the future / the paramedic practitioner of the future. This will enhance the key skills to challenge the competitive career they have chosen and enhance their ability to progress their careers.

PRACTICE-BASED EDUCATION

Level 6 will consist of several appropriate practice-based education areas.

If any learner does not manage to sign off all competencies, then Medipro will arrange (at no additional cost):

- An extension of the practice-based education
- Move to another appropriate practice-based education area
- Assessment through simulation at Medipro training centre
- A combination of the above

Current available practice-based education areas include:

NHS Trusts	Clinical Placement Area	Hours
North East Ambulance Service NHS Trust	Paramedic Ambulance Crew	160
North Tees and Hartlepool NHS Hospital Trust	Obstetric / Maternity	40
North Tees and Hartlepool NHS Hospital Trust	Paediatrics	40
North Tees and Hartlepool NHS Hospital Trust	Minor Injury / Urgent Care	80
	TOTAL	360

PRACTICE-BASED EDUCATION

Current available elective practice-based education areas include:

Practice Provider	Clinical Placement Area	Total Hours
Kettering Hospital NHS trust	Paramedic led critical resuscitation	40
Kettering Hospital NHS trust	Clinical research	
North Tees and Hartlepool NHS Hospital Trust	Clinical research	
North Tees and Hartlepool NHS Hospital Trust	Any area already attended	
Medipro	Clinical education	
Falck Fire	Industrial COMAH specialist site	

* This list is not exhaustive and will change as new practice-based education sites are available.

Level 6



4 Year Roadmap

Year	1	2	3	4	5	6	7	8	9	10	11	12	13	14	15	16	17	18	19	20	21	22	23	24	25	26			
Year 1 (L5)	Yellow		Black										Yellow		80 hours ambulance										Red				
Year 2 (L5)	Orange	40 hours ambulance														Green	40 hours admission/elderly												
Year 3 (L6)	Brown			Blue			40 hours maternity										Blue			80 Hours MIU/urgent Care									
Year 4 (L6)	Brown					Dark Blue	80 hours ambulance										Purple	40 hours amb elective											



Year	27	28	29	30	31	32	33	34	35	36	37	38	39	40	41	42	43	44	45	46	47	48	49	50	51	52	
Year 1 (L5)	80 hours A&E										Red	40 hours theatre										Brown					
Year 2 (L5)	Green	40 hours ITU/ICU										80 hours Ambulance										Brown					
Year 3 (L6)	80 Hours MIU/urgent Care			Blue	80 hours ambulance										Dark Blue	40 hours paediatrics										Brown	
Year 4 (L6)	Purple	Black										Brown															

	1	2	3	4	5	6	7	8	9	10	11
Module Key	SPS5-1	SPS5-2	SPS5-3	SPS5-4	SPS6-1	SPS6-2	SPS6-3	SPS6-4	Placement	Slippage	Consolidation Time

*Your placement block will be allocated to you at the start of your programme. The placement block can be any week(s) within the quarter.

Class Weeks	Placement Hours
7	200
3	200
6	240
3	160
Total: 19 Weeks	Total: 800 Hours



TRIPARTITE TUTORIALS

Tutorials are an important tool and will be used during your time with Medipro and during practice-based education.

This is an ideal opportunity to discuss and explore any concerns or issues you may have and an opportunity to develop Individual Learning Plans. This will enable our learning, development and educational faculty and dedicated practice educators (PEd) to work with you to maximise your potential. Tutorials are recorded and form part of your continuous professional development (CPD).

Tutorials are an opportunity for the learner to highlight in confidence any issues they may be experiencing during the programme which may include health, family issues, fellow learners or tutors etc.



TEACHING, LEARNING and ASSESSMENT

The aim of the Level 6 Paramedic Practitioner Programme is to support, educate, and develop learners into safe, enquiring and effective practitioners with the capacity to care for patients, families and colleagues in a range of challenging and unpredictable situations. These objectives will be achieved through a teaching scheme delivered through three key components: knowledge, skills and behaviours

The acquisition of knowledge will be achieved through lecture teaching sessions and workshops, a strong clinical and simulation aspect as well as self-directed study through online and library resources. A solid foundation of knowledge will then foster to further develop the skills of paramedic practice primarily through active

How will I be assessed?

engagement at workshops, simulation, assignments, and portfolio development. The final component of behaviours emphasises the need for the learner to develop the skills to effectively communicate with services users and colleagues. Learning from all three components will be applied to clinical practice, with the learner undertaking reflective practice, interprofessional learning and demonstrating professional development through the completion of various assessments and active participation with practice educators, completing the required assessment documents.

Assessment is integral to the continuous process of learning and development and holds a vital role in the learners overall learning experience. Integral to the development of this programme consideration has been given to the contribution of assessment, with the aim of exposing learners to a balanced range of assessment activities. Giving key consideration to the relevance to the development of clinical autonomous paramedics of the future. All assessments have been clearly mapped to the learning outcomes of the programme.



HOW WILL I BE ASSESSED?

The programme utilises a fluid, contemporaneous and authentic summative assessment strategy, designed to change in line with practice requirements and to minimize risk associated with academic misconduct and reduce the impact of artificial intelligence (AI) in the production of assessed material.

Various assessment methods are used throughout the programme which include (but not limited to) written exams, OSCE's, presentations, academic submissions and detailed reports.

Assessment regulations



Assessment Regulations

This programme is assessed in line with the Medipro programme assessment policy. Assessments are marked, moderated and internally quality assured by Medipro and externally quality assured by FutureQuals and the external examiner. All learners must successfully complete each element of the programme to be awarded the Level 6 in Paramedic Practitioner and be eligible to apply to the HCPC for Paramedic registration.

Assessment Deadlines

It is your responsibility to submit your work for assessment as required. If you feel you are unable to meet a deadline you should contact the module lead to request an extension.



Reassessment Strategy



If learners are unable to successfully achieve the summative assessment for the programme, then reassessment strategies include:

- Structured feedback and learning and development plan
- Re-submission of assignments
- Re-sit written assessments
- Retake OSCE(s)
- Additional time in practice-based education
- All re-assessments are taken within 20 working days

Assessment regulations

Key Elements



- All level 5 assessment must be successfully completed before progressing to level 6
- Progression to level 6 will be on the recommendation of the exam board at the end of your level 5 studies. Learners will be notified if there are any issues with an appropriate action plan
- All level 6 assessment must be passed to obtain the qualification award
- If a learner leaves the programme for whatever reason and all of the level 5 modules have been completed, the learner will be awarded the credit for those modules which can be used if returning at a later date. - all assessments must be passed



Scan me for a link to see the Medipro assessment policy document.

Practice-based education

Whilst working in practice-based education it is expected that you will use all appropriate opportunities to enhance your knowledge, skills and behaviours to develop into a more competent, safe and effective practitioner.

Medipro teaching, learning and assessment team, along with other educational faculty members are aware that some skills may be outside your current scope of practice and you will need approval from the practice-based education areas before developing these. The programme does not aim to assess you as competent to perform any procedures outside the scope of current paramedic practice.

Practice-based education will be arranged by Medipro with NHS Hospitals, NHS Ambulance Service Trusts, or other relevant practice placement areas or through an agreed and signed honorary contract. All practice-based education providers must undergo a full audit prior to accepting any learners.

Each learner will receive:

- Location of practice-based education areas including maps and contact details
- Timetable
- Professional Paramedic Practice Competencies (PAD)

Throughout your practice-based education, you will have a competency workbook identifying your aims and objectives and competency outcomes.

Learners are expected to act responsibly and to conduct themselves in a professional manner, representing and adopting the standards expected of a HCPC learner.

How will I be supported to succeed?



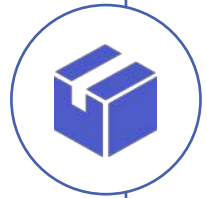
Medipro will take any misconduct or report of inappropriate behaviour very seriously and may lead to removal from the programme.

You'll receive ...

All learners will receive a full set of uniform to use during placements (no extra cost), this will include placements (no extra cost), this will include:

- Several tops/trousers (green)
- PPE (Hi-Viz, safety helmet, safety boots)
- ID badge and identifying epaulettes which must be displayed

Some practice-based education areas may provide scrubs for your use, if this is not the case all learners are expected to wear their allocated uniform.



Scan me to read the Guidance on conduct and ethics for students

Support for learners

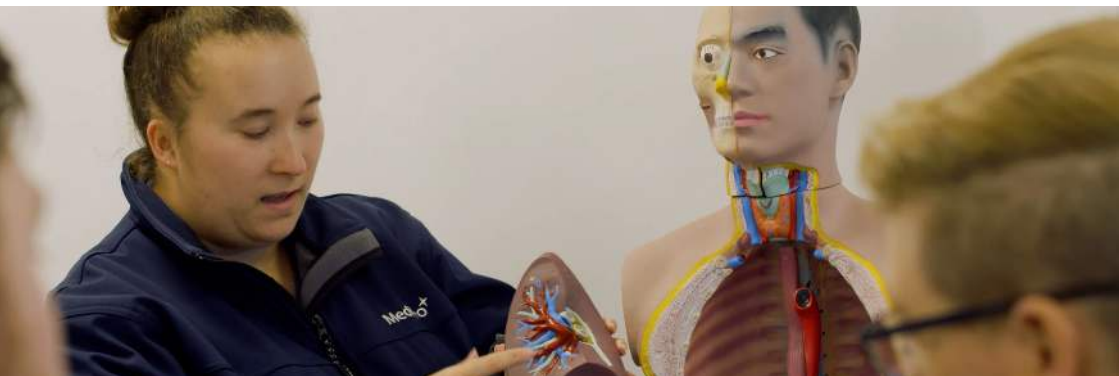
Medipro has designed this programme to support and challenge learners throughout their learning, development and educational experience.

High quality learner support, acknowledging equality, diversity and inclusion throughout, is closely integrated with the programme and this occurs when Medipro staff work hard to get to know and understand their learners.

There are frameworks and structures in place which help learners to overcome vocational, academic or personal difficulties. It empowers learners to develop their own expectations of themselves, and to make the most of their learning experience.

High quality support allows learners to embrace the challenges which are an important part of good teaching. It occurs in a culture where Medipro tutors and support staff work in partnership, and where both formal and informal contact between staff and learners are encouraged and systematically supported.

Initiatives to support key periods in the learner journey exist alongside academic initiatives to support retention and progression and this is a crucial partnership between Medipro tutors and learners and involves openness and respect and identifies the responsibilities, and mutual commitment to a genuine process of continuous learning.



Support for learners

Support for Learners include...

- **Personal tutor allocation:** each learner will be allocated a single point of contact tutor to help co-ordinate any additional support needed
- **Academic support:** learners will have access to academic writing support staff
- **Occupational support:** all learners will be required to undergo health screening and clearance for practice through our occupational partners. Additional support is available as and when required
- **Tripartite Tutorials:** Learners will participate in regular face-to-face and/or online tutorial meetings with their education team and practice-based education PEd's. It is an opportunity for learners and PEd's to discuss any ongoing concerns and develop appropriate support plans to enhance your learning.
- **Pastoral support:** learners have access to dedicated pastoral support
- **Practice Placement Facilitator** – support throughout practice-based education
- **Safeguarding support:** whilst in practice all learners have access to a dedicated Safeguarding Lead



Support for learners

Additional Support includes...

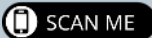
Learners on the programme will have access to Medipro's IT provision (including loan laptop) for the duration of the award.



Access to Library resources

All learners will be given access to a number of resources which include:

- NHS Athens (including all online libraries, on-line learning and resources)
- NHS LKS library services which include a number of ebooks, resources and research facilities



Scan me for a link the to the Library and Knowledge Service for NHS Ambulance Services in England website

- Access to North Tees NHS hospital 24-hour library facilities



Additional support includes:

- Access to IT facilities
- Access to reference materials including books, journals etc...

Support for learners

All learners will have access to a number of additional library reference books to extend their reading and learning which will include:



- 12-Lead ECG: The Art of Interpretation
- The Complete Guide to ECGs, Fourth Edition
- Introduction to Human Disease, Sixth Edition Sixth Edition
- Pathophysiology: A Practical Approach Third Edition
- Anatomy & Physiology for the Prehospital Provider Second Edition
- Mosby's Paramedic Textbook Fourth Edition
- Sanders' Paramedic Textbook 1st Edition
- Paramedic: Pathophysiology First Edition
- Pain: an ambulance perspective
- Oxford handbook of emergency medicine
- Oxford handbook of expedition and wilderness medicine
- Minor injuries – A clinical guide
- Anatomy and Physiology – Ross and Wilson
- MacLeods Clinical Examination

Support for learners

Additional Support includes...

Journal access and e-learning will include:

- BMJ Best Practice
- Cochrane Library
- EBSCO Databases, Discovery Service, eBooks, Point of Care Products, DynaMed and Journal Collections
- Proquest
- Maudsley Prescribing Guidelines in Psychiatry
- Ovid Technologies, Inc.
- ProQuest
- The JAMA Network
- Trip Medical Database



We also have a portfolio VLE for our learners on the quals-direct platform

- Accessing resources and policies
- Submitting academic work
- Receiving feedback
- Communicating with your academic tutor



What are my responsibilities as a learner?

In keeping with the philosophy of adult learning, development and education, Medipro recognises and supports learner centred development and education. Medipro aims to keep learners at the centre of this experience.

Support and guidance throughout the programme include:

- Engaging actively in the learning, development and education process
- Taking responsibility for your own learning, development and education
- Communicating regularly with the Medipro teaching, learning and assessment team
- Communicating regularly with your clinical practice placement mentor(s)
- Effective self-management of your studies

Teaching & Learning Activities



Consent will be required in order that you can fully participate in practice-based activities. As part of the programme you will be expected to take part in some practical based sessions and some experiential activities which will develop your professional knowledge, skills and understanding. As these sessions are an important component to your learning, development and education you will be expected to participate.

Health and Fitness

Health and Fitness

Health and fitness is an important aspect of being an HCPC registered paramedic. Therefore, it is essential that each learner has a good level of general fitness before embarking on this programme.

As a learning and development and educational provider we have the discretion to challenge any individual who Medipro think is not physically fit to safely undertake the programme. In such circumstances, appropriate professional guidance will be sought and then discussed with the learner which may, in certain cases, result in exclusion from this programme.

Medipro therefore ask that each learner complete a health screening questionnaire/declaration which will form part of their personal file. Any associated costs for health screening or occupational support will form part of the course fees, there will be no additional costs to the student.



For further information please see our Fitness Policy and/or the HCPC guidance on health and character information at the QR code.

Preparing to study

Computers and the internet have an important role in contemporary education. This role is increasing as time goes on. Therefore, it is very important for all learners who embark on this programme to have access to and the skills necessary to use these facilities as all submitted work must be word processed.



After the Programme

Following successful completion of this programme you will be awarded a Level 6 Diploma in Paramedic Practitioner from FutureQuals.

At this point you will be eligible to apply to the HCPC for registration as a paramedic.

If you are accepted onto the register you will be eligible to practice as an HCPC registered paramedic.

Please remember it is your responsibility to complete and maintain a continuous personal and professional development (CPD) portfolio as evidence your achievements and continuous practice.

As an HCPC registered paramedic you may be asked by the HCPC to produce this portfolio as evidence to confirm you are competent and safe to practice. This will not occur during your first two years on the HCPC register.



Full details can be found on the HCPC website QR code.

Key programme information

Fees £18000 (Ex VAT) which is paid in monthly instalments (£450 per month) Credit value can you make Level 5 and Level 6 both 120

Delivery Model Part-time

Duration 4 years (maximum time to complete is 5 years) –
This excludes any 'break in learning'

Credit value Level 5 = 115
Level 6 = 125

Location Faraday House, Stockton on Tees, TS18 3TT



Programme funding arrangements

Various funding options exist for students entering this programme, which include:

- Enhanced Learning Credits (ELCAS) for military leavers
- Advanced Learner Loan
- Career Transition Partnership support for military personnel
- Professional Career Development Loan (PCDL)
- Personal loan
- Medipro 0% finance instalment option (paid in quarterly instalments in advance)

Each learner will have an opportunity to discuss their own personal circumstances and which option(s) is best for their needs.

There are two payment options for learners which are:

- The fees are paid in full prior to the start of the programme. This can be direct from the learner or from a funding stream accessed by the learner and the fees are paid directly to Medipro. In this instance, the funds are held within a holding account and drawn down in quarterly instalments in advance, which will help protect the learner's funds.
- The programme fees are paid in quarterly payments in advance by the learner. This can be the learner self-funding the programme or where they have accessed a funding option which has meant the fees are paid directly to them and they elect to pay in quarterly instalments.

In both options, Medipro payment agreement applies.



Accommodation

There is no onsite accommodation and it is the responsibility of the learner to arrange their own, at your own cost. We can however assist in locating the most appropriate and cost-effective solutions.

Commonly Asked Questions

The following is a guide to assist in answering some of the most commonly asked questions.

If I am unsuccessful during the entrance process, can I apply in the future?

Yes of course, should a potential learner be unsuccessful during the initial entrance process we will give constructive feedback, advice and suggestions. This will allow you to focus on any specific areas of improvement to allow you to re-apply at a later date.

What about attendance, do I need to attend each session?

Yes. The structure of the programme is very specific and such Medipro feel it is essential that each session is attended.

We do however recognise the need in an emergency that you may miss some sessions. In this instance, we have systems in place to ensure your studies are not affected and you do not fall behind.

Full details can be found within the Attendance Policy.

We also recognise some learners may have exceptional instances where elements need to be extended, especially practice-based education. In this instance learners can apply for special considerations on a 'case by case' basis.

Commonly Asked Questions

Will I have time for annual leave?

As the programme is part-time study, by nature it allows for ample time to work and take appropriate annual leave. We only ask you work closely with our practice facilitator to ensure leave is appropriately planned.

Where will my practice-based education be?

Practice-based education is arranged in a variety of areas to enhance your knowledge, skills and education. Full details including times, maps and dedicated practice educators (PEd's) will be given to you during the programme.

Examples of placements may include:

- NHS Hospitals
- NHS Ambulance Service
- NHS minor injury units
- Other relevant approved placement areas

Can I arrange my own placements?

This is possible following our robust practice-based education audit. However, you must have this in place and agreed before you commence this programme.

Commonly Asked Questions

Are the practice-based education areas 'practice placement' and will I be insured?

Yes, all our practice-based education areas allow you to 'practice' under the supervision of your practice educator and all learners of Medipro are insured under our 'medical malpractice' insurance policy.

Will I be paid for placements?

All placements form part of the programme and are not paid unless you have an agreement with your/an employer.

Will I have to work shifts whilst on placement?

Yes, due to the nature of the paramedic role and the agreement with our practice-based education providers, you will be allocated a mixture of shifts that may include weekends, nights and bank holidays.

Commonly Asked Questions

I work in the hospital/ambulance sector already, can I get some of my practice-based education competencies signed off before I start the course or use some of the hours to count towards my programme?

Unfortunately not, the reason behind this is because the practice-based education experiences we provide are there to embed the new learning and teaching that you will be completing during the programme.

What if I don't get all my competencies signed off?

Medipro understands that not all competencies may be achieved in practice. This is why we allocate a number of clinical areas to give you as much opportunity as possible. If, for whatever reason some competencies are not 'signed off' we can support in a number of ways, which may include extending the practice-based education period, arranging an alternative area, simulated assessment as-well as several other strategies. If we need to extend any area or adopt any other assessment plan, there will be no additional costs to the learner.

Commonly Asked Questions

What if I need to cancel my programme?

If you need to cancel your programme, for whatever reason, then Medipro can look at moving you onto a future programme. If you need to cancel and are unable to re-schedule, then you will need to refer to Medipro terms and conditions regarding cancellation fees and exiting a course.

If I'm unsuccessful can I get a refund?

If you are unsuccessful then Medipro will look at developing you an individual learning plan to close out any identified deficiencies and discuss the possibility of returning on a future programme. We would not be able to offer any refund for any costs received.

What if I have a complaint?

Medipro takes all complaints seriously and will attempt to resolve all complaints satisfactorily. Details of the complaints procedure is available in Medipro Complaints Policy as well as your learner handbook.

Can I appeal an academic decision?

Yes, Medipro operates a robust appeals process for learners who don't agree with an academic grade, award or assessment decision. Details of how to raise an academic appeal is contained within your learner handbook.

Commonly Asked Questions

What happens if I fail an assessment?

Throughout the programme there are several assessments as well as a number of varied assessment strategies. Should any learner fail or not pass any element, Medipro will put in place a robust development plan to assist you in achieving the required standard. All assessment can be retaken once to give learners as much opportunity to achieve the award.

What if I don't have the Level 4 Associate Ambulance Practitioner (AAP) award awards, can I still apply?

Medipro only recognise the AAP qualification as entry onto the programme. However, if learners have other equivalent awards they should contact us to discuss any RPL available options.

It is worth noting that the RPL route requires learners to complete the mapping document and produce all their own evidence to prove they have met all the learning outcomes. There is a non-refundable fee for this process.

Can I pick my own Practice Educator (PEd)?

Unfortunately not, all PEd's are professional clinicians and qualified within their role as a practice educator. However, if you have a complaint about your PEd, you can raise this in the normal complaints procedure, or speak to the Medipro Practice Placement Facilitator (PPF) to discuss any concerns.

Commonly Asked Questions

When is payment required?

This depends on how you fund your course. We have a number of options available which include 0% payment option, ELCAS support and professional career development loans (PCDL) via the government. However, funding options change all the time so it is worth contacting us to see how we can help.

One factor to consider, if you are eligible for government funding or support then the course costs are reduced to remove the VAT amount.

Can I work during the periods I am not in practice-based education?

Yes, as the programme is part-time delivered over 4 years, this is one of the benefits of allowing ample time to allow you to earn as the same time as learning.

If I fail or decide not to continue would I receive any certificates or awards?

Although there are no exit awards for this programme, if learners complete all level 5 modules in full, credit for those modules will be provided. This would allow you to re-enter the level 6 part at a later date or use the credit for another appropriate programme.

Commonly Asked Questions

What assessments do I complete?

The assessments are varied throughout the programme and include:

- Short answer question papers
- Assignments which include essays, reflections and case studies
- Presentations
- Group discussions
- Practical OSCEs
- Practice-based education competencies

Whilst essays and academic work can be daunting for many, we work with all learners to ensure they are well prepared and supported throughout the entire process.

Do I need a UK Visa to attend this course?

If you are not a UK or EU citizen then yes you would need an appropriate visa to attend. We are currently in the process of obtaining a home office licence to support your visa, please contact us to register your interest.

I have visible tattoo and/or facial piercings, can I still apply?

There is no definitive answer to this question as we would need to consult our practice-based education provider(s) as this would fall within their policies and procedures. We encourage you to contact us to discuss your individual case.

Commonly Asked Questions

Is there a fitness test?

We don't complete a fitness test as part of the entrance process, however, we do require all learners to complete a health surveillance. As your training provider we do reserve the right to challenge learners who we feel are not physically fit for the role of a paramedic. In such instances we would seek expert advice from our occupational health department and/or seek clarification from the HCPC.

Is there a minimum or maximum age to join the programme?

Minimum of 18 and no maximum age.

Do the costs include accommodation?

No, learners are responsible for arranging their own accommodation at their own cost. However, we can help you find the most cost effective solution and some of the finance and loan options can have accommodation costs added to them.

Can I go onto a masters programme after this course?

This is up to the university you wish to apply to. Many of our learners have used their level 6 award to enter directly onto a masters programme.

Commonly Asked Questions

Do the ambulance services accept this qualification for their paramedic staff or would I have to have a university degree?

There is no requirement to have a degree to be employed by the NHS ambulance service as a paramedic. The services require that you are registered with the HCPC as a paramedic, which this programme will allow you to be eligible to apply. Many of our learners are already employed by the NHS and/or have gained employment across the NHS.

I have a criminal conviction, can I still apply?

Having a criminal conviction or caution may not necessarily bar you from entering the HCPC register as a paramedic. Therefore, please contact us to discuss your individual circumstances and we will obtain clarification for you. When completing your application form, you must declare all convictions to allow us to support you further. In most circumstance we need to liaise with our Practice-based Education providers to follow their requirements too.

I have a disability or a long-term medical condition, can I still apply?

Having a disability or long-term health condition doesn't necessarily prevent you from becoming a paramedic. We encourage you to contact us to discuss your individual circumstances.

Commonly Asked Questions

If I have further questions or concerns can I speak with someone?

Yes. We will be releasing several dates for open days where learners who are considering this course can call in and discuss the issues or concerns. Alternatively our admission team are always at hand to assist and can be contacted via email at admissions@medipro.co.uk or by calling 01325 609030



MediPro[★]



Scan me to access a link to
a digital copy of this handbook

MediPro Limited, Faraday House, Stockton on Tees, TS18 3TT

Tel: 01325 609 030 Monday – Friday 08:00 - 17:00

www.medipro.co.uk